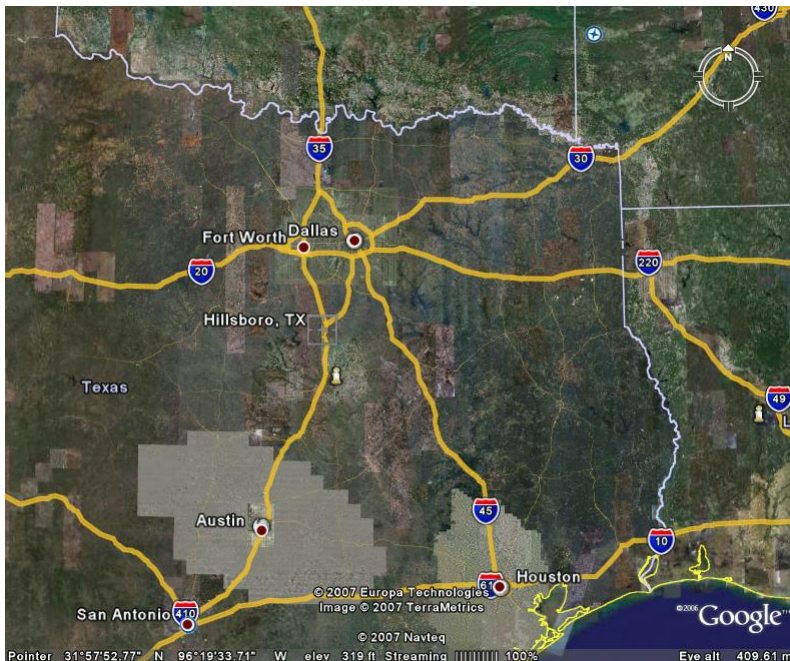


Everything Within Reach

Hillsboro's strategic location is one of our **key attributes**. Whether a business is shipping or receiving by truck, train, or air, Hillsboro's location on the "NAFTA Highway" provides convenient access to and from the major transportation hubs of the State and beyond into other states and Mexico.

Location

- On Interstate 35 (I-35) at the southern end of the split that takes I-35 East through Dallas and I-35 West through Fort Worth
- About an hour south of Dallas/Fort Worth city centers via I-35
- About 30 minutes north of Waco
- About 2 ½ hours north of Austin
- About 3 ½ hours from San Antonio
- About 3 ½ hours from Houston



Traffic Counts

Hillsboro is located in the Texas Department of Highways (TXDOT) Waco District. TXDOT 2005 traffic counts are available upon request for TXDOT maintained roadways in Hillsboro. The City of Hillsboro can make arrangements to collect traffic count information for City streets on a project-specific basis.

Freight Carriers

Over 200 freight carriers are found within a 50 mile radius of Hillsboro, including 50 plus carriers that are listed within a 50 miles area of Waco.

Next Day Delivery Service

Federal Express, and United Parcel Service provide daily pick up and delivery service in Hillsboro.

Rail Service

Hillsboro is served by the main north-south Union Pacific (UP) rail line that runs through central Texas.

UP provides service into the Hillsboro Industrial Park via a lead track, with spurs to individual locations. Existing rail-served sites, as well as greenfield sites that have the potential to be rail served, are available in the industrial park. See the property data base for specifics.

For additional information on rail services, schedules, and fees, please contact UP at 281-350-7496, or visit www.up.com.

Air Service

Dallas/Fort Worth International Airport (DFW) is about 80 miles north from Hillsboro, in the mid-cities area of the Dallas/Fort Worth metroplex.

- Passenger service: 18 carriers (domestic and international)
- Air cargo service: 23 carriers (domestic and international)
- Please see www.dfwairport.com for details

Dallas Love Field is about 70 miles north from Hillsboro in Dallas

- Passenger service: American Eagle, Continental Airlines, Delta/Pinnacle Airlines, Express Jet, and Southwest Airlines (domestic)
- Please see www.dallas-lovefield.com for details

Waco Regional Airport is about 35 miles south from Hillsboro

- Passenger service: American Airlines and Continental Connection offer connecting flights to DFW and Houston International Airport
- Please see www.waco-texas.com/airport/airport.htm for details

Hillsboro Municipal Airport is about 3 miles north of Hillsboro on I-35W & TX 2959

- 4000x60 feet asphalt runway
- Instrument approach
- Jet-A and 100 Low Lead Fuel available-24 Hour Credit Card Self Service
- Commercial Maintenance Service Available
- Hours of Operation Monday – Friday 8 a.m. – 5 p.m. (except Holidays)
- Courtesy car to transport passengers to Hillsboro-limit 2 hours
- See www.hillsborotx.org, City Departments, Municipal Airport, for more detail